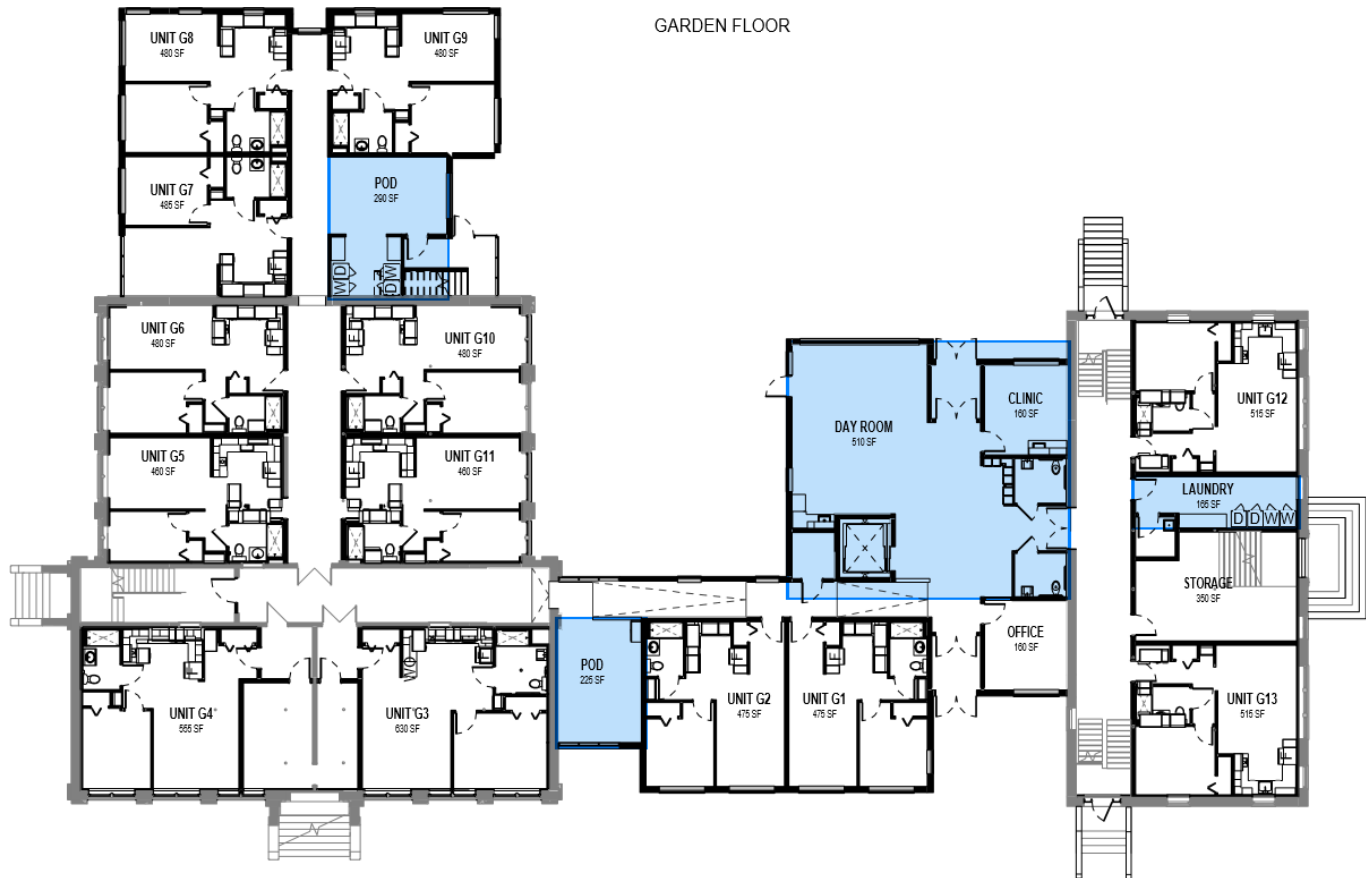


# WINCHENDON PROJECT BRIEF



The project goal is to repurpose the vacant Streeter and Poland School Buildings into 44 single resident apartments of veterans housing, with support spaces located on the 3.8 acre site, zoned R10 – Neighborhood Residential. The total size of the project is 39,731 gsf on three levels. Streeter School, 14,870 gsf in size and Poland School, 8,230 gsf, are to be fully renovated. New construction includes 16,631 gsf to be added in two portions—between the existing buildings and on the eastern end of Streeter School. Activity areas are planned, with furnishings and equipment to invite resident use. Additionally, the site will include 22 parking spaces, a courtyard along with recreational areas, grill area and raised beds for gardening.

## Current Plans/Drawings: GARDEN FLOOR



The Garden Floor includes:

- 13 units
- 2 “pods” (small gathering areas for residents)
- 1 laundry space
- Day room
  - o This will be a multi-use space, with a small sink, to be used for meetings and classes
- Clinic
  - o This will be a multi-use space for both medical and counseling use
- Office (for case manager)
- Storage (for facilities)
- Security cameras will be placed at all entrances/exits as well as in the elevator

## Current Plans/Drawings: FIRST FLOOR



The First Floor includes:

- 14 Units
- 1 combined laundry/pod
  - o The pod in this space will have a TV and seating area
- 1 free standing pod
  - o This pod will be set up with a table and chairs and storage cabinet, to serve as a game/puzzle area
- 1 small common area

## Current Plans/Drawings: SECOND FLOOR



The Second Floor includes:

- 17 units
- 1 combined laundry/pod
  - o The pod in this space will have a TV and seating area
- 1 free standing pod
  - o This pod will be set up with a table and chairs and storage cabinet, to serve as a game/puzzle area
- 1 small common area
- *Note: The elevator on this floor has a half-stop to accommodate the different in height between the two buildings.*
  - o *I opted for stairs with a multi-stop elevator in lieu of a ramp because the grading was too steep for comfortability in frequent use.*